



Aastha
A tradition of trust...



A PROJECT BY - PRASIDDHI ENTERPRISES



About Us

Prasiddhi Group is a reputable real estate development firm that has been in operation since 2010. With over a decade of experience, we have established ourselves as a trusted and reliable player in the real estate industry. Our core mission is to create high-quality infrastructure and turn our customers' dream homes into a reality.

Since our inception, we have gradually expanded our portfolio, completing more than 2 lac square feet of work and offering over 250 units to our satisfied customers. We take pride in delivering both residential and commercial projects that meet the evolving needs of our community.

As a real estate developer, we have thrived in response to the city's rapid growth and the increasing demand for housing. Our commitment to quality, customer satisfaction, and adaptability has been key to our success in the industry.

At Prasiddhi Group, we continue to strive for excellence, working diligently to create spaces that our customers can proudly call home, and offering a range of real estate solutions that cater to diverse preferences and requirements

Ours Projects

Ongoing Projects



Samruddhi Amber
(Kiwale, Pune)



Tatvam Residency
(Ravet, Pune)



Shivansh Residency
(Kiwale, Pune)

Completed Projects



Samruddhi Palash
(Kiwale, Pune)



Shuti Pushp
(Kiwale, Pune)

Key Features



COMMON SPECIFICATIONS

- Solar water heating system
- Common lift for the building
- Common Fire fighting system
- Common underground water tank
- Overhead water tank
- RCC Frame work structure
- 6" Internal and External walls
- External double coat plaster
- TV Cable Points in Living Rooms & Master Bedrooms
- AC Point Provision For Master Bedroom



DOORS / WINDOWS

- Laminated main entrance door and internal flush doors with Plywood Frames
- Sliding doors or foldable door for terrace
- 3-track sliding windows with Mosquito Net
- MS Safety Grills for all windows
- Marble or granite sill at bottom for all windows



ELECTRICAL FITTINGS

- Concealed wiring and modular switches
- Single phase MSEB meter for individual apartment



BATHROOM / TOILET

- Provision for Geyser in bathrooms
- Concealed Plumbing with Branded CP fittings & Sanitary Ware
- Commode Tiles Up to Lintel Level in the Bathrooms
- Dado tiles up to lintel level in all bathrooms
- Full Height Designer Wall Tile in Bathroom & Toilets
- Wash Basin in Passage with Wall Tiles
- Anti Skid Tile For Rerrace & Toilet Flooring
- Provision for Washing Machine
- FRP Door in Toilet
- Marble or Granite Door Frame & Window



FLOORING

- Vitrified tile flooring and skirting for all rooms
- Anti-skid tile flooring in toilets and attached terraces



PAINT

- Internal emulsion paint
- External walls, balconies & terraces with acrylic emulsion paint

Amenities



Solar water heating system



Lifts with backup



Backup for common areas



Fire fighting system



EV Charging Point Provision



Garbage Chute

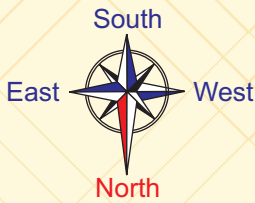


Rain water Harvesting



Security System

Floor Plan



Area Statement

Sr. No.	Flat Type	Flat No.	Carpet Area		Balcony		Total Area	
			Sq. Mtr.	Sq. Ft.	Sq. Mtr.	Sq. Ft.	Sq. Mtr.	Sq. Ft.
01.	2 bhk	101, 201, 301, 401, 501, 601, 701 102, 202, 302, 402, 502, 602, 702	53.10	571	10.80	116.25	63.9	688
02.	1 bhk	103, 203, 303, 403, 503, 603, 703 104, 204, 304, 404, 504, 604, 704	38.57	415.16	9.90	106.5	48.47	521

Interior Cut View

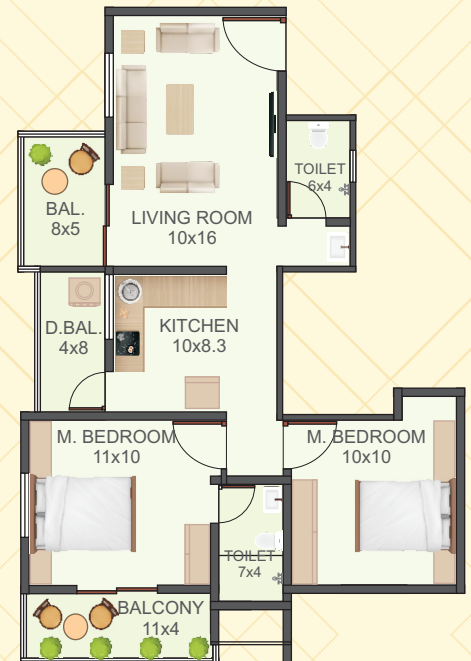
1 BHK FLAT

Total Carpet Area - 521 Sq. Ft.



2 BHK FLAT

Total Carpet Area - 688 Sq. Ft.

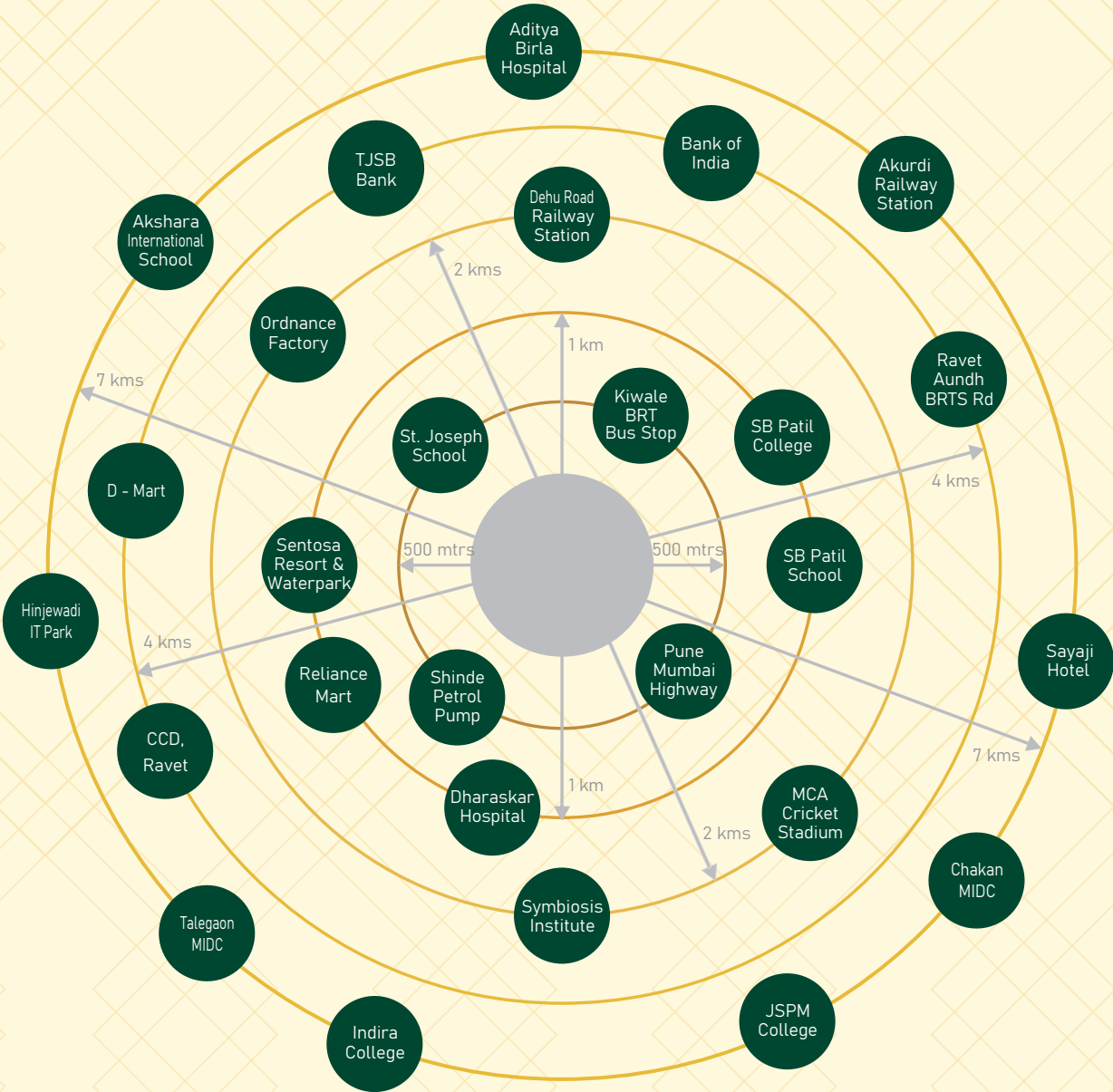


Why Kiwale -Ravet

Kiwale is a rapidly growing locality in Pune, and it offers several location advantages that make it an attractive investment hotspot for residential properties. One of the primary benefits is its strategic location near the Mumbai-Pune Expressway, which quickly connects Kiwale to Mumbai and Pune.

Moreover, Kiwale's proximity to Hinjewadi IT Park, a technopark that houses some of India's most giant multinational corporations, has led to a surge in demand for residential projects in Pune from working professionals who want to avoid long commutes.

Kiwale also offers excellent connectivity through public transport such as buses, cabs and trains. The nearby Dehu Road Railway Station provides easy access to other parts of Pune and beyond. And Kiwale saw impressive infrastructural development over the years. It boasts top-class educational institutions like Indira College and hospitals like D.Y.Patil Hospital.



Location Map



EASY DISTANCE FROM SITE

- ✓ Express Highway 0.3 km
- ✓ Dehuroad Railway Station 1.5 km
- ✓ Sahara Cricket Stadium 2.5 km
- ✓ D.Y. Patil Collage 3 km
- ✓ Indira Collage 5 km
- ✓ Petrol Pump 0.3 km
- ✓ Hinjewadi IT Park 9 km
- ✓ Pune University 23 km
- ✓ Dehuroad Market 1.2 km
- ✓ BRT Bus Terminus 0.5 km
- ✓ D - Mart 0.5 km

Credits

Architects

Patil and Bugade Associates

Legal Advisor

Adv. Vishal Jagdale

RCC Designer

Ravindra Karnavat

A PROJECT BY



PRASIDDHI

— ENTERPRISES —

Office Address -

Prasiddhi Group, Office No. 204, One Mall, BRT, Link Rd,
Ravet, Pune - 412101

Site Address -

Survey No 41/1B/2, Plot No 06, Pendse Colony, Vikasnagar,
Kiwale, Pune -412101

Email: Sanil@prasiddhidevelopers.com Web : Prasiddhidevelopers.com

Contact No. : 7744932424, 9146416237, 8087564365